



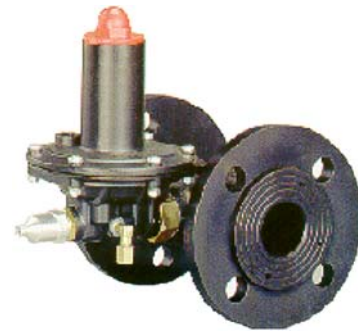
SHUT-OFF VALVES BM7/ SERIES DATA-SHEET

CONSTRUCTION FEATURES

- Ease of installation
- Ease of maintenance
- High operation accuracy

AVAILABLE VERSIONS

- BM7/1 1/2" Threaded connections DN 1 1/2" GAS
- BM7/40-FS Flanged connections DN 40 PN 16 UNI/DIN (With sliding flanges)
- BM7/2" Threaded connections DN 2" GAS
- BM7/2"-F Threaded connections DN 50 PN 16 UNI/DIN



TECHNICAL FEATURES

Permissible inlet pressure $P_{e,max}$: up to 14 bar
 Inlet pressure range b_{pe} : 0 to 14 bar

Versions with OS/66

Set range for maximum pressure W_{ho} : 0.025 to 0.5 bar
 Set range for minimum pressure W_{hu} : 0.007 to 0.4 bar

Versions with OS/66-AP

Set range for maximum pressure W_{ho} : 0.2 to 5 bar
 Set range for minimum pressure W_{hu} : 0.1 to 2.5 bar

Accuracy class AG : up to $\pm 5\%$
 Response time t_a : ≤ 1 sec.

Temperature

Standard version
 Working $-10\text{ }^\circ\text{C}$ $+60\text{ }^\circ\text{C}$
 Ambient $-20\text{ }^\circ\text{C}$ $+80\text{ }^\circ\text{C}$

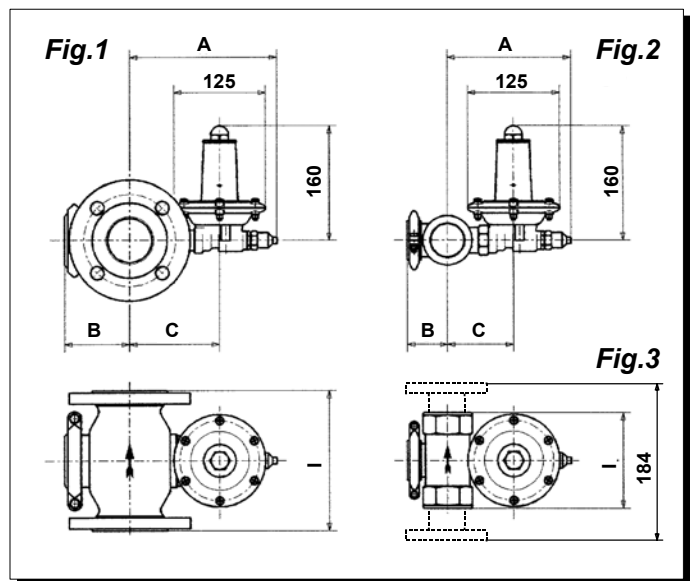
Low-temperature version
 Working $-20\text{ }^\circ\text{C}$ $+60\text{ }^\circ\text{C}$
 Ambient $-30\text{ }^\circ\text{C}$ $+80\text{ }^\circ\text{C}$

COEFFICIENTS

Type	Cg	C1
BM7/1 1/2"	170	29
BM7/40-FS	170	29
BM7/2"	500	29
BM7/2"-F	650	29

OVERALL DIMENSIONS mm

Type	A	B	C	I	Fig.
BM7/1 1/2"	165	57	90	130	2
BM7/40-FS	165	57	90	184	3
BM7/2"	190	85	120	160	2
BM7/2"-F	195	90	125	190	1



MATERIALS

VALVE

BODY	BM7/1 1/2"	GS 400-18L UNI ISO 1083 cast iron
	BM7/40-FS	GS 400-18L UNI ISO 1083 cast iron
	BM7/2"	GS 400-18L UNI ISO 1083 cast iron
	BM7/2"-F	GS 400-18L UNI ISO 1083 cast iron Fe G 450 UNI 3158-77 Steel
SEAT	P-Cu Zn 40 Pb2 UNI 5705 Brass	

TRIGGER ACTUATORS OS/66 AND OS/66-AP

DIAPHRAGM	NBR Fabric. Rubber
COVERS	GD Al Si12 Cu2 Fe UNI 5076-74 Die-cast aluminium

O.M.T. Tartarini reserves the right to modify the content of the following document in any moment and according to market and production requirements.

00	FIRST ISSUE	21/07/98	Massimo Caselli	
REV	MODIFICATION DESCRIPTION	DATE	DRAWN UP	APPROVED